

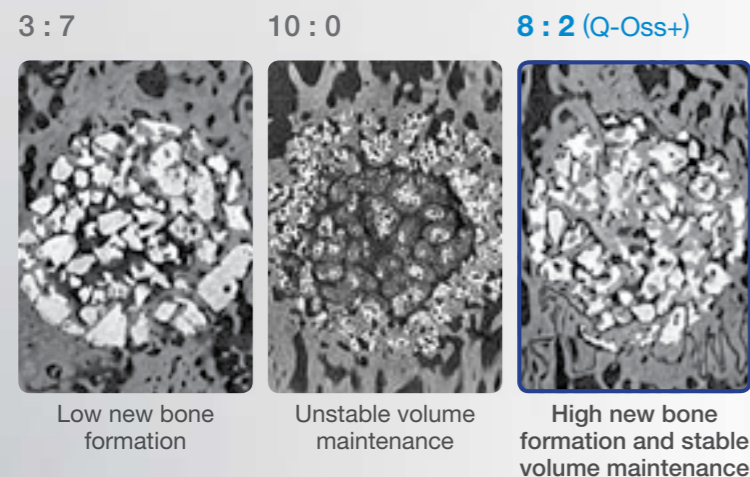
Synthetic Bone Graft with Excellent Bone Formation and Replacement Capacity

Q-Oss+

- Optimum bone composition ratio β -TCP 80% + HA 20%
- Exceptional pore structure and blood wettability
- Good bone substitution performance, suitable for use with bone replacement sites

Applied Optimum Bone Composition Ratio

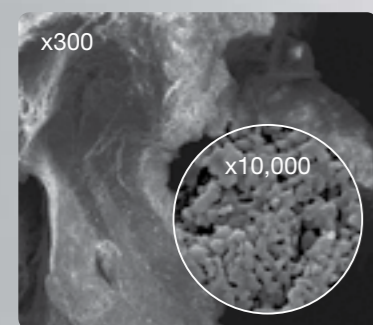
Q-Oss + is applied to β -TCP 80% + HA 20%, optimum bone composition ratio



Exceptional Pore Structure and Blood Wettability

- High specific surface area with interconnected microspheres (average 2.0 m²/g)
- New bone formation by excellent blood wettability and osteogenic cells in blood

Pore Structure

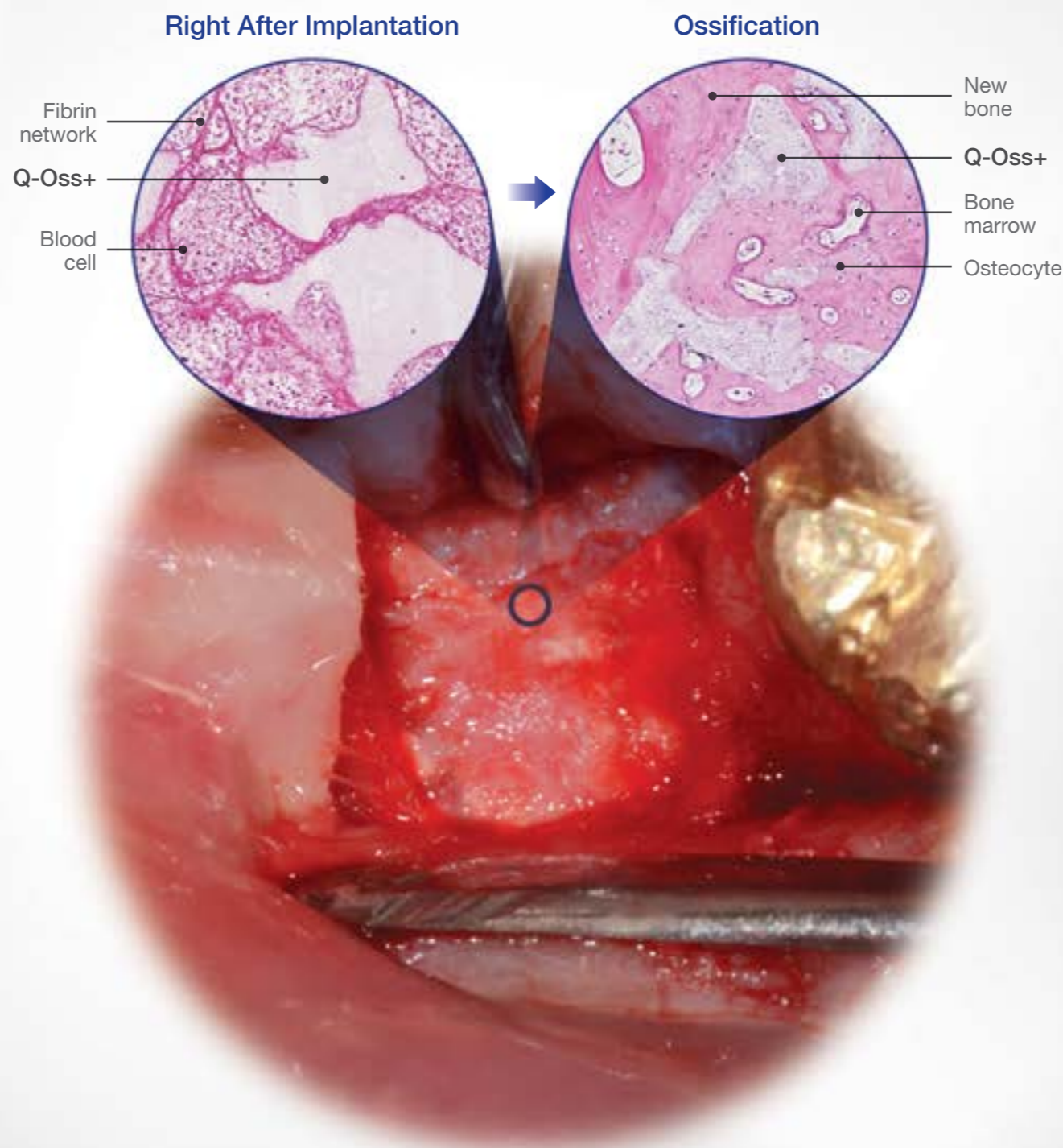


Macropores & micropores

Blood Wettability



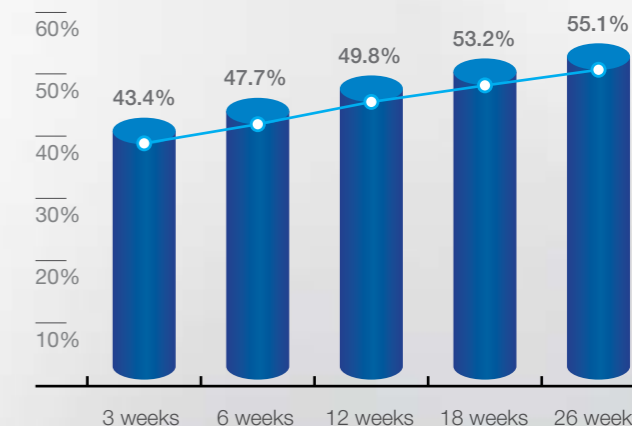
Soak in 1.0 cc blood



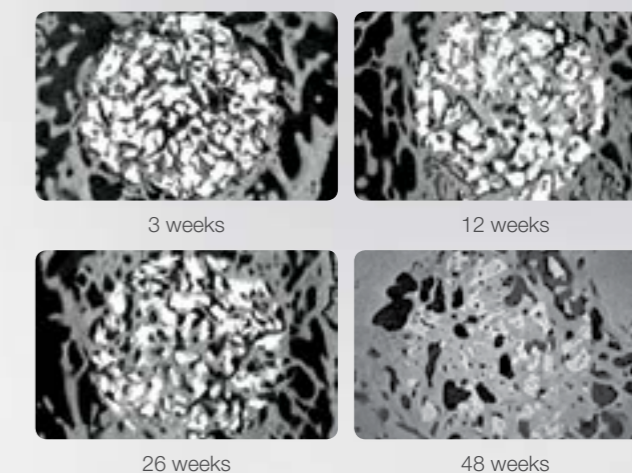
Good Bone Substitution Performance, Suitable for Use with Bone Replacement Sites

- Q-Oss + is gradually degraded / absorbed during new bone formation
- It is advantageous for posterior procedure requiring replacement of bone such as implant placement

New Bone Formation Volume



Bone Replacement Performance



Osstem GBR Line-Up

| Bone Graft Material | | | | Membrane | | | Builder |
|--|---|---|----------------|-----------------------------|--------------------------------|---|--|
| Allograft Bone | | | | Xenograft Bone | | Synthetic Bone | Non-absorbable |
| Powder / Chip | | DBM | Block Bone | Powder / Chip | Collagen | Powder / Chip | Titanium |
| Absorbable | | Non-absorbable | | Absorbable | | | Non-absorbable |
| Collagen | | Human Dermis | | PTFE | | | |
| | | | | | | | |
| SureOss Cortical 100% | SureOss-D Demineralized cortical 100% | SureFuse Demineralized/gel, putty type | Genesis | A-Oss Bovine bone | OssBone Porcine bone | Q-Oss+ TCP 80% + HA 20% | OssBuilder 3D pre-formed titanium membrane |
| | | | | | | | |
| CANOSS Cancellous 100% | OsteOss Cortical 50 + cancellous 50% | ExFuse Demineralized + cancellous/gel, putty type | | | | Bongros HA100% | |
| | | | | | | | |
| Ingross Demineralized + cortical | | Bellafuse Sheet type, demineralized | | | | Cytoplast RTM Bovine collagen | |
| | | | | | | | |
| | | | | | | OssGuide Porcine collagen | |
| | | | | | | | |
| | | | | | | SureDerm Human dermis | |
| | | | | | | | |
| | | | | | | Cytoplast Densed PTFE | |